

Anhang

Inhalt

1.1 Allgemeine Innere Medizin	2
9.1 Allgemeine Chirurgie	5

1.1 Allgemeine Innere Medizin

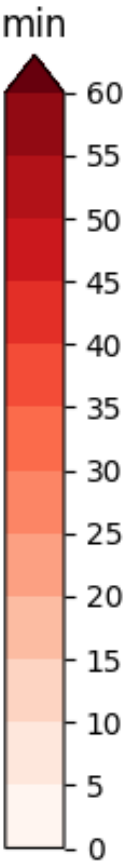
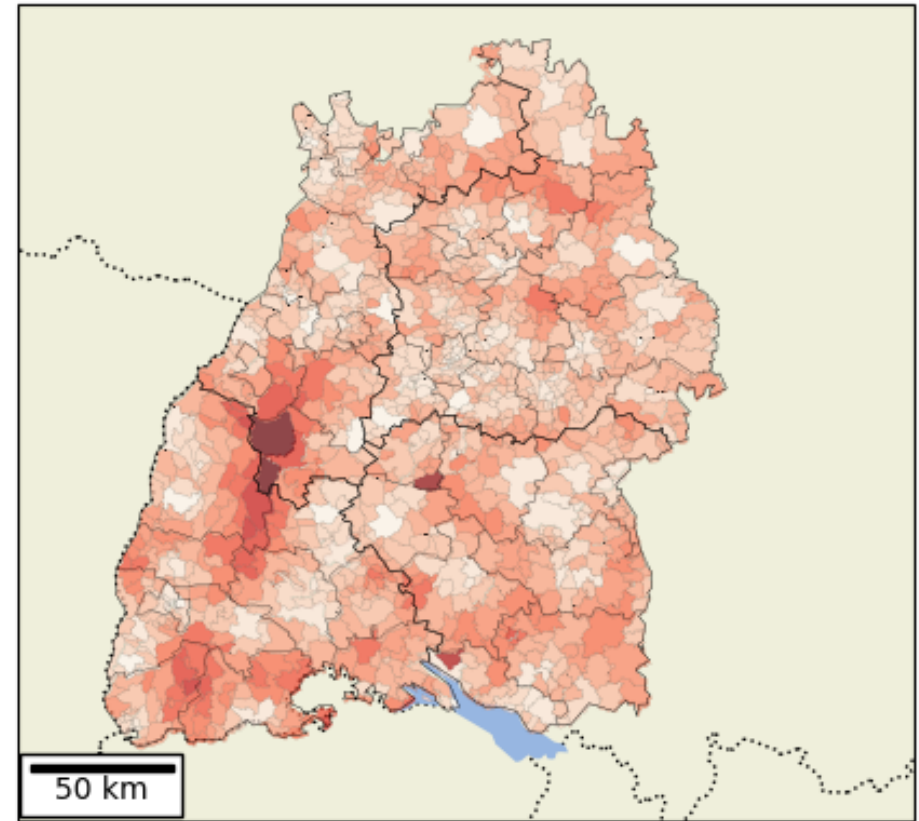
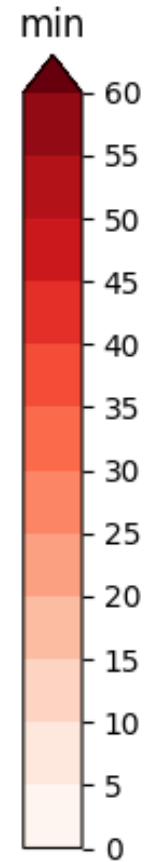
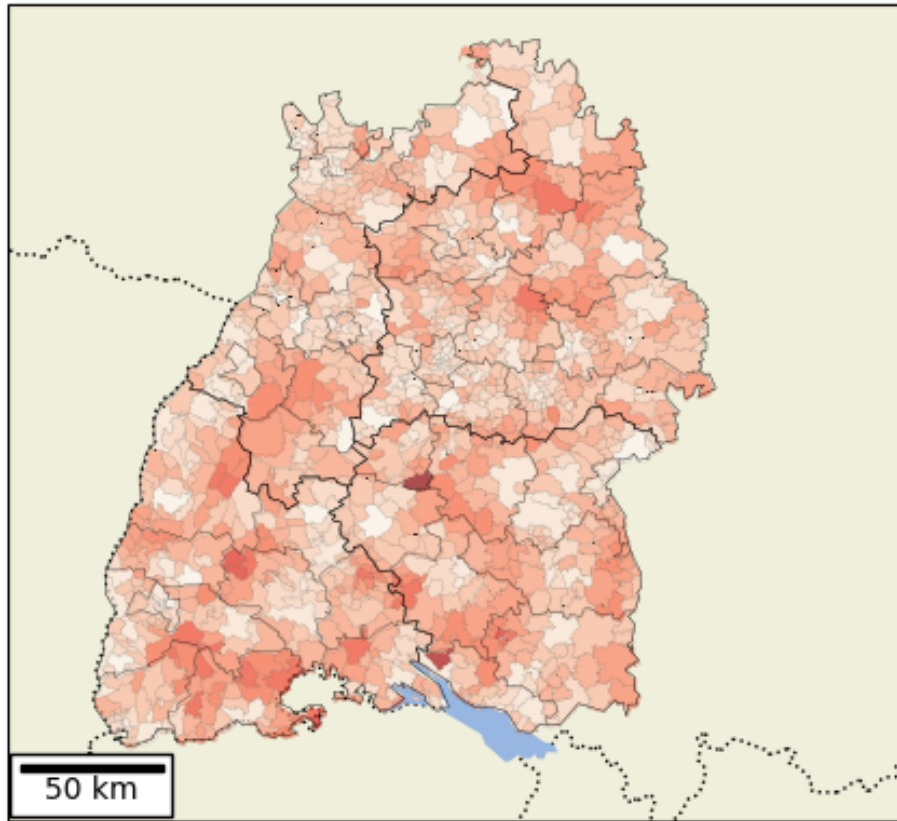


Abbildung 1.1 I: Erreichbarkeit im ex-ante Status der Versorgungslandschaft

Abbildung 1.1 II: Erreichbarkeit im ex-post Status der Versorgungslandschaft

1.1 Allgemeine Innere Medizin

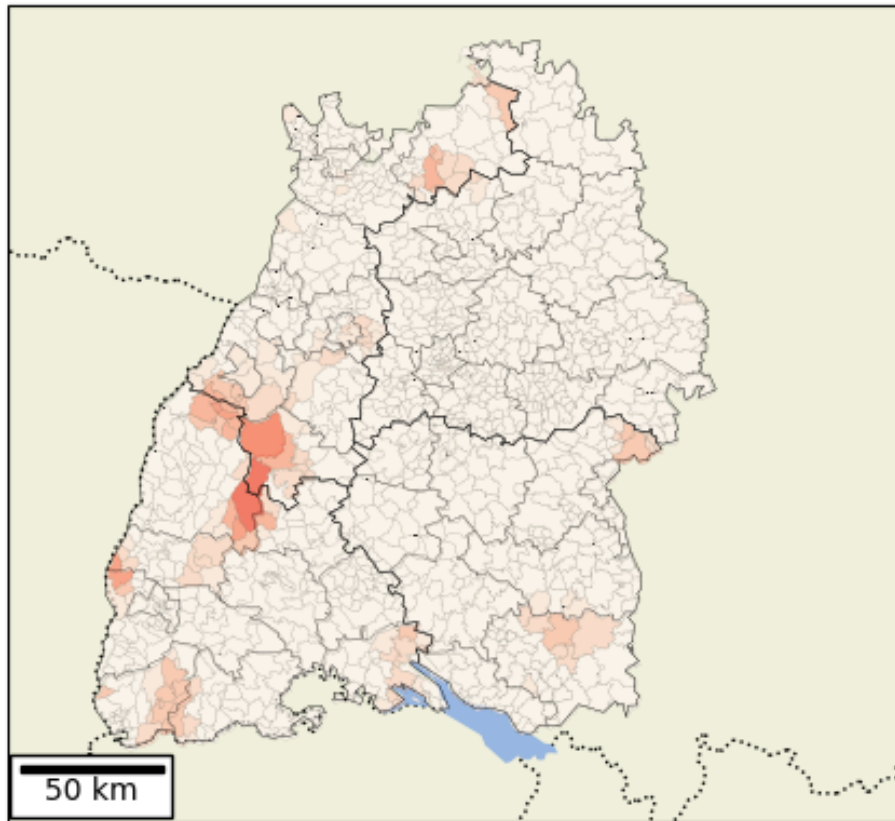


Abbildung 1.1 III: Erreichbarkeitsdifferenz zwischen ex-ante und ex-post Status

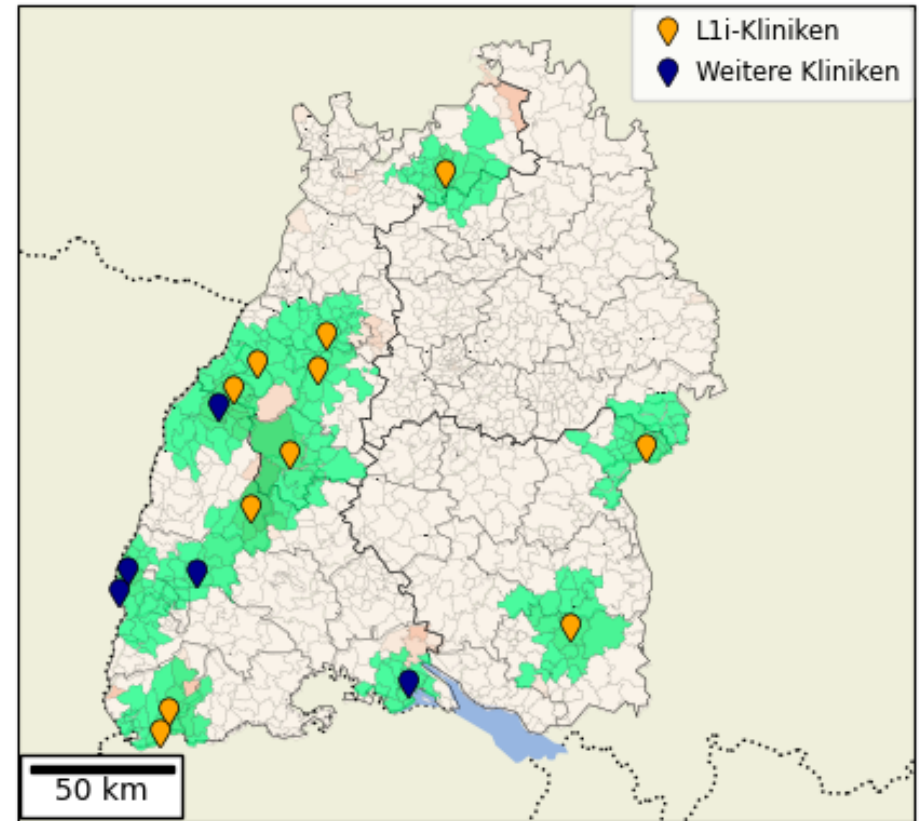
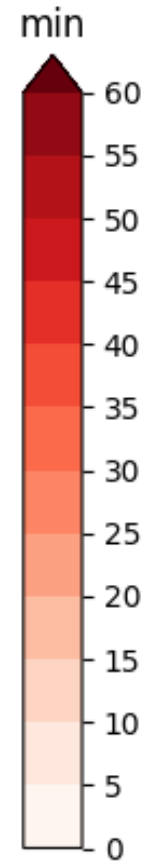
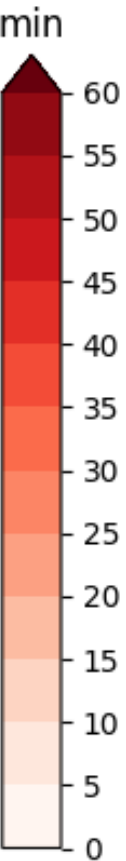


Abbildung 1.1 IV: Kompensation der Erreichbarkeitsdefizite durch Telemedizin



Fahrzeit in Minuten	Szenario Ex ante			Szenario Ex post			Szenario Telemedizin		
	Abs.	Rel.	Kum.	Abs.	Rel.	Kum.	Abs.	Rel.	Kum.
0 – 5	730.125	7%	7%	619.710	6%	6%	658.574	6%	6%
5 – 10	2.237.472	20%	27%	1.831.402	16%	22%	2.074.248	19%	25%
10 – 15	2.738.041	25%	51%	2.627.828	24%	46%	2.748.051	25%	49%
15 – 20	2.605.880	23%	75%	2.538.021	23%	68%	2.615.636	23%	73%
20 – 25	1.696.738	15%	90%	1.834.683	16%	85%	1.806.886	16%	89%
25 – 30	805.571	7%	97%	997.701	9%	94%	910.042	8%	97%
30 – 35	201.219	2%	99%	379.390	3%	97%	201.609	2%	99%
35 – 40	86.216	1%	100%	187.369	2%	99%	86.216	1%	100%
40 – 45	9.318	0%	100%	64.688	1%	100%	9.318	0%	100%
45 – 50	0	0%	100%	12.934	0%	100%	0	0%	100%
50 – 55	4.523	0%	100%	4.523	0%	100%	4.523	0%	100%
55 – 60	20.494	0%	100%	20.494	0%	100%	20.494	0%	100%
> 60	0	0%	100%	16.854	0%	100%	0	0%	100%
Gesamt	11.135.597			11.135.597			11.135.597 100,0%		
Anzahl KH	129			93			109, davon 16 telemedizinisch		
Fahrzeit länger als 30 Minuten	321.770	3%		686.252	6%		322.160	3%	

Tabelle 1.1 IV: Betroffenheitsmaß nach Bevölkerungsanzahl zwischen ex-ante und ex-post Status der Versorgungslandschaft, sowie nach Kompensation durch Telemedizin

	Unterversorgt
--	---------------



9.1 Allgemeine Chirurgie

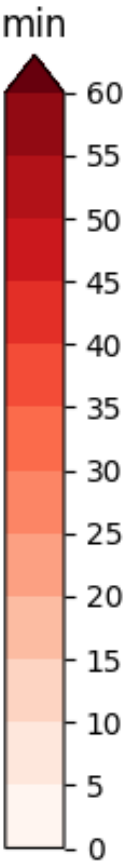
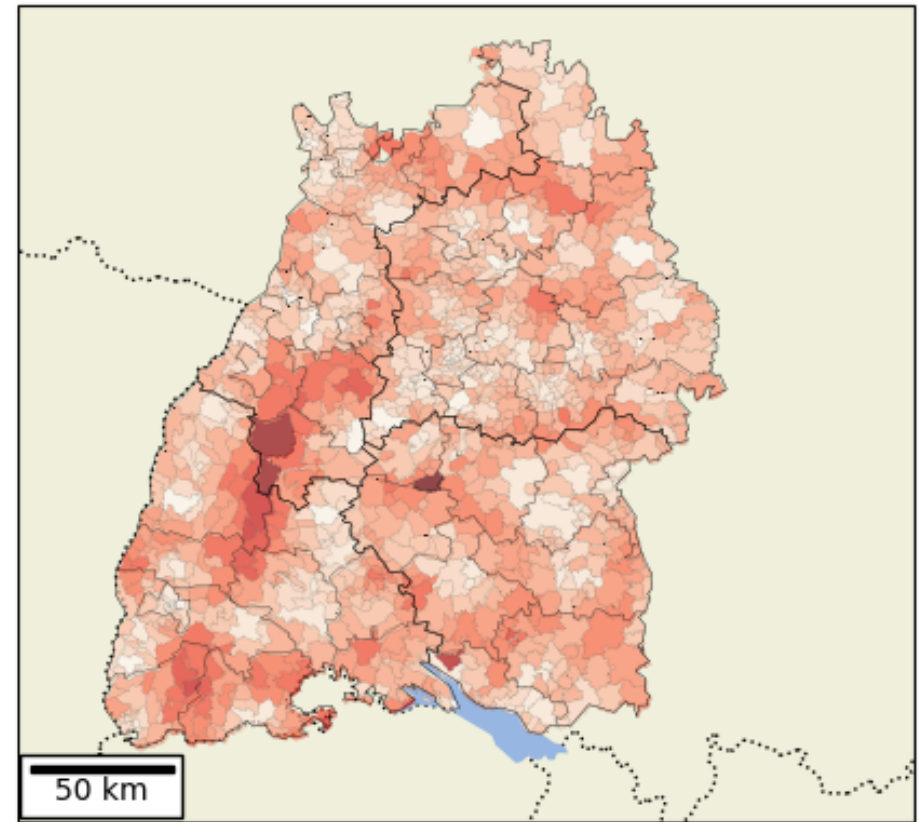
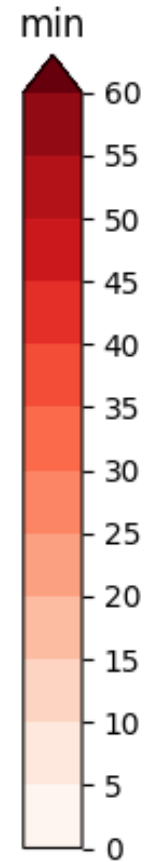
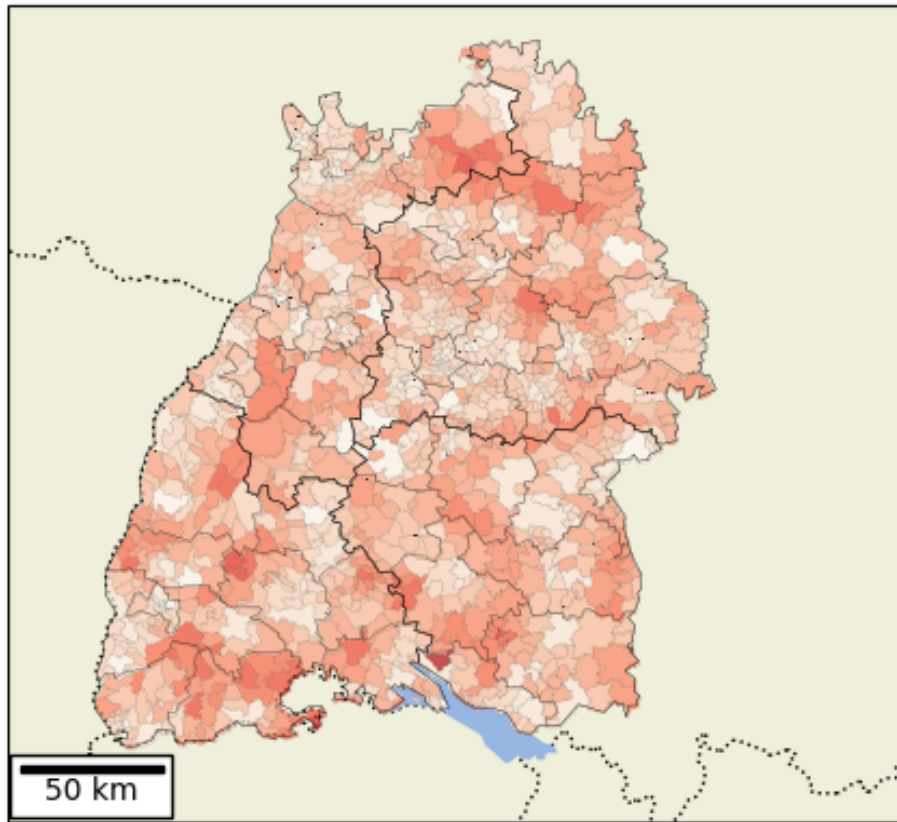


Abbildung 9.1 I: Erreichbarkeit im ex-ante Status der Versorgungslandschaft

Abbildung 9.1 II: Erreichbarkeit im ex-post Status der Versorgungslandschaft

9.1 Allgemeine Chirurgie

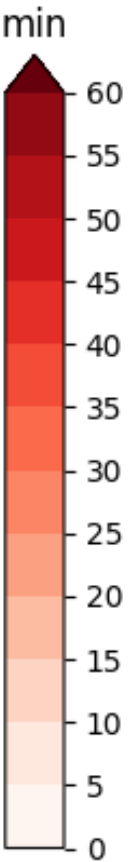
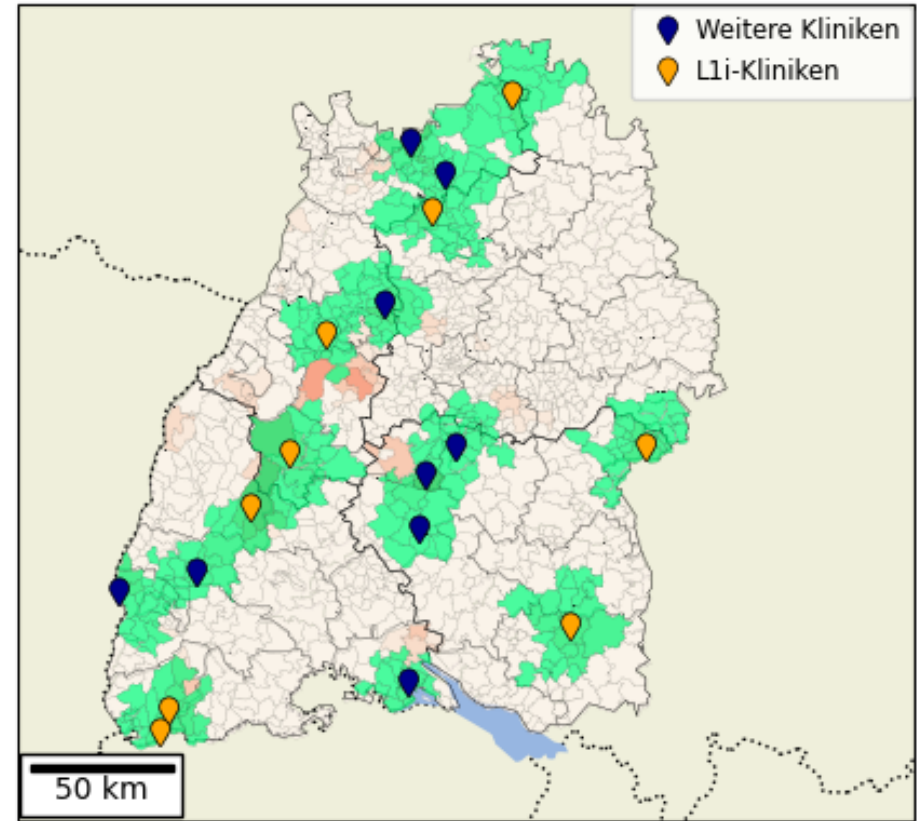
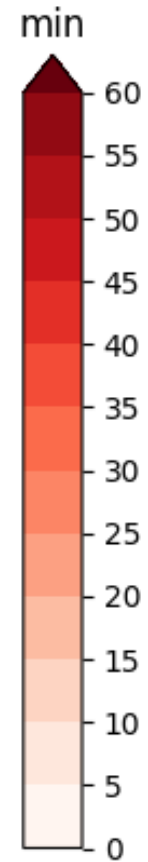
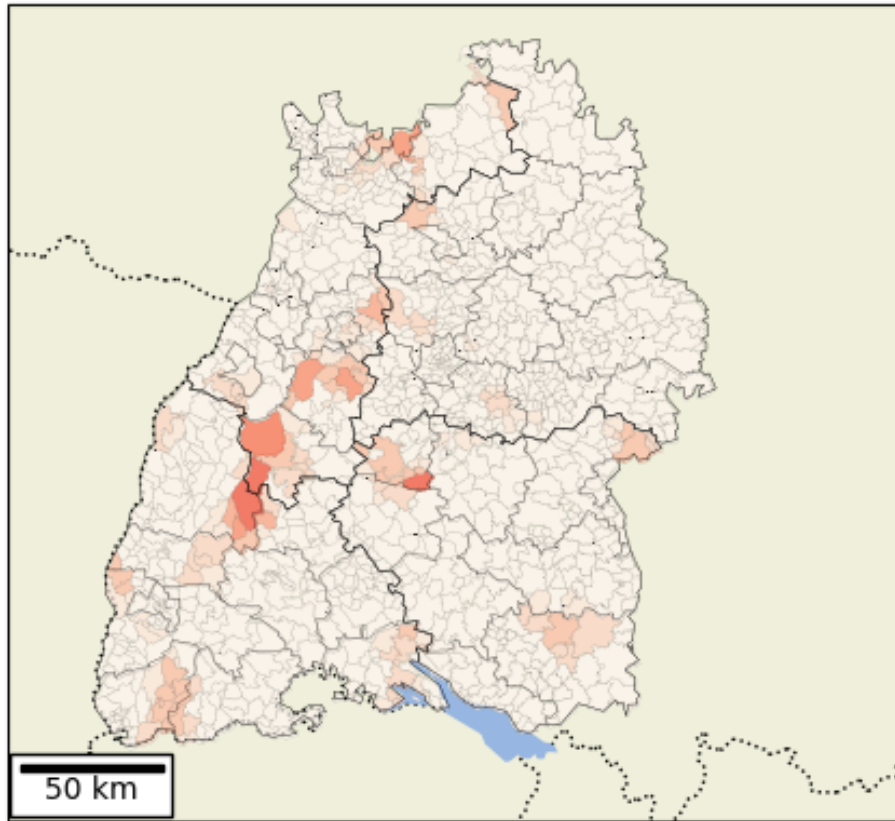


Abbildung 9.1 III: Erreichbarkeitsdifferenz zwischen ex-ante und ex-post Status

Abbildung 9.1 IV: Kompensation der Erreichbarkeitsdefizite durch Telemedizin

Fahrzeit in Minuten	Szenario Ex ante			Szenario Ex post			Szenario Telemedizin		
	Abs.	Rel.	Kum.	Abs.	Rel.	Kum.	Abs.	Rel.	Kum.
0 – 5	776.288	7%	7%	559.112	5%	5%	630.793	6%	6%
5 – 10	2.229.239	20%	27%	1.857.036	17%	22%	2.016.599	18%	24%
10 – 15	2.911.069	26%	53%	2.452.684	22%	44%	2.711.013	24%	48%
15 – 20	2.316.749	21%	74%	2.412.356	22%	65%	2.500.315	22%	71%
20 – 25	1.782.337	16%	90%	1.957.483	18%	83%	1.914.244	17%	88%
25 – 30	731.329	7%	97%	1.036.367	9%	92%	922.145	8%	96%
30 – 35	252.522	2%	99%	485.274	4%	97%	283.909	3%	99%
35 – 40	118.326	1%	100%	270.592	2%	99%	139.595	1%	100%
40 – 45	13.215	0%	100%	51.313	0%	100%	12.461	0%	100%
45 – 50	0	0%	100%	11.509	0%	100%	0	0%	100%
50 – 55	4.523	0%	100%	4.523	0%	100%	4.523	0%	100%
55 – 60	0	0%	100%	16.854	0%	100%	0	0%	100%
> 60	0	0%	100%	20.494	0%	100%	0	0%	100%
Gesamt	11.135.597			11.135.597			11.135.597 100,0%		
Anzahl KH	129			89			107, davon 18 telemedizinisch		
Fahrzeit länger als 30 Minuten	388.586	3%		860.559	8%		440.488	4%	

Tabelle 9.1 IV: Betroffenheitsmaß nach Bevölkerungsanzahl zwischen ex-ante und ex-post Status der Versorgungslandschaft, sowie nach Kompensation durch Telemedizin

	Unterversorgt
--	---------------

